

## Fun Filled Energisers



### ZOMBIE ESCAPE

The Zombie Escape Team Activity is an exhilarating team-building challenge where participants must work together to solve puzzles and escape a simulated zombie outbreak.

GROUP SIZE : ANY

INDOOR/OUTDOOR



### PERFECT SQUARE

This Activity is an designed to enhance communication, collaboration, and leadership skills where participants form a circle and are blindfolded, then given a rope to create a perfect square without visual input.

GROUP SIZE : ANY

INDOOR/OUTDOOR



### SPEED DATING

This activity is designed to help team members break the ice, foster connections, and learn fun or meaningful details about their colleagues in a fast-paced and interactive format.

GROUP SIZE : ANY

INDOOR/OUTDOOR



### 1-2-3 CLAP

1-2-3 Clap Up is a quick, fun energizer where pairs count "1-2-3" aloud, replacing one number with a clap each round. It sparks laughter, sharpens focus, and boosts team coordination in minutes!

GROUP SIZE : ANY

INDOOR/OUTDOOR





## Team Bonding Games



### PLANK WALK

Balance, trust, and teamwork are put to the test! In this physically engaging activity, team members must work together to navigate a narrow "plank" or balance beam, relying on each other for support and stability.

GROUP SIZE : ANY

INDOOR/OUTDOOR



### CATERPILLAR RACE

The "Caterpillar Race" is a dynamic and entertaining team-building activity that requires participants to work together in a coordinated manner to move as a single unit, much like a caterpillar.

GROUP SIZE : ANY

INDOOR/OUTDOOR



### SHRINKING VESSEL

In this activity teams are confined within a gradually shrinking space, requiring them to collaborate and adapt to stay within the boundaries. It's a problem-solving exercise that emphasizes adaptability, quick thinking, and teamwork.

GROUP SIZE : ANY

INDOOR/OUTDOOR



### HELIUM STICK

Team must lower a stick to the ground while keeping it in contact with their fingers at all times. The stick, in the beginning, acts like it's filled with helium, rising rather than falling, forcing teams to work together to find a solution.

GROUP SIZE : ANY

INDOOR/OUTDOOR







## Blind Fold Fun



### MINEFIELDS

The Minefield Team Activity challenges participants to navigate a minefield blindfolded, relying on their teammates' guidance. This exercise enhances communication, trust, and strategic thinking within the team.

GROUP SIZE : ANY

INDOOR/OUTDOOR



### TRUST FALL

The Trust Fall is a courageous team-building activity that strengthens trust and collaboration among team members. Participants take turns falling backward into the arms of their teammates, relying on them for support and safety.

GROUP SIZE : ANY

INDOOR/OUTDOOR



### BLIND MUSICAL CHAIR

This is a thrilling twist on the classic musical chairs game, adding an element of strategy making. Participants navigate the activity blindfolded, based on instructions from their teammates, making it a fun and engaging team-building exercise.

GROUP SIZE : ANY

INDOOR/OUTDOOR



### LEAD FROM THE BACK

Here team members will be blindfolded and must rely on verbal instructions from a leader to navigate a predetermined course. This game enhances communication skills, team cohesion and builds trust.

GROUP SIZE : ANY

INDOOR/OUTDOOR





## Fun Filled



### TALLEST TOWER

This engaging team-building exercise is designed for workplace settings. Teams will work together to construct the tallest possible tower with given resources.

GROUP SIZE : 0-50

INDOOR/OUTDOOR



### ACID RIVER

This Team Activity challenges groups to strategize and collaborate to navigate an imaginary river using limited resources. This exercise emphasizes listening, strategic thinking, teamwork, and effective communication.

GROUP SIZE : ANY

INDOOR/OUTDOOR



### EGG DROP

A STEM team-building exercise where participants design and build a device to protect a raw egg from breaking when dropped from a height. The objective is to find ways to absorb the energy of impact and prevent the egg from shattering.

GROUP SIZE : ANY

INDOOR/OUTDOOR



### MAX STRETCH

The primary goal of the Max Stretch is to provide a dynamic and enjoyable team-building experience. Participants will work together to collect as many balls as possible without entering a designated circle.

GROUP SIZE : ANY

INDOOR/OUTDOOR





## The Quest



### PASS THE BATTON

In The Baton Challenge, teams compete to pass the baton through a series of creative and strategic formations. Each round introduces new restrictions, testing your team's adaptability and coordination.

GROUP SIZE : ANY

INDOOR/OUTDOOR



### KEY PUNCH

Team must be working together to touch numbered spots in sequence as quickly as possible. This high-energy exercise emphasizes the importance of strategy and cooperation.

GROUP SIZE : ANY

INDOOR/OUTDOOR



### MISSION IMPOSSIBLE

This activity is an exhilarating challenge where team members work together to collect the milestones and navigate one team member with the support of a belt.

GROUP SIZE : ANY

INDOOR/OUTDOOR



### CROSS OVER LAVA

This activity challenges participants to strategize and work together to navigate a simulated lava field using limited resources, emphasizing teamwork, problem-solving, and quick decision-making under pressure.

GROUP SIZE : ANY

INDOOR/OUTDOOR



## Crossing Challenge



### SPIDER WEB

In this activity Participants must collaborate to navigate through a web of ropes or strings without touching the threads, simulating a real-life problem-solving scenario that requires careful planning and execution.

GROUP SIZE : ANY

INDOOR/OUTDOOR



### HUMAN BRIDGE

In this team-building activity participants work together to create a "human bridge" by using their bodies or bamboos to form a series of rungs, allowing other teammates to climb over

GROUP SIZE : ANY

INDOOR/OUTDOOR



### BRUSH STROKE

Brushstroke Words is an energetic and creative team-building activity that challenges each team to write a word using a single paintbrush within a specified time limit.

GROUP SIZE : ANY

INDOOR/OUTDOOR

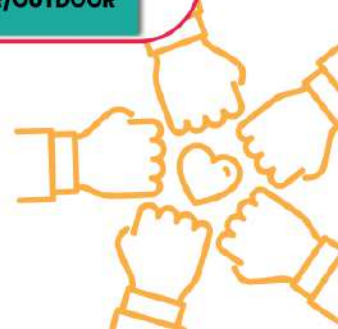


### TIC TAC TOE

This team game involves two teams competing to be the first to get three of their team's marks (X or O) in a row (horizontally, vertically, or diagonally) on a 3x3 grid.

GROUP SIZE : ANY

INDOOR/OUTDOOR





## Beach Side Games



### RAFT BUILDING\*

Raft Building is a hands-on, adventurous team-building activity that requires participants to design, construct, and potentially navigate a raft using limited materials.

GROUP SIZE : ANY

OUTDOOR



### DUO VOLLEY BALL

The Duo Volley Team Activity is a fun and engaging exercise as pairs work together to keep the volley ball going. It's perfect for building synergy within a team.

GROUP SIZE : ANY

OUTDOOR



### LEAKY PIPES

In this game, teams must work together to transport water through a leaky pipe and fill a container as quickly as possible. The challenge lies in coordinating roles, managing resources, and preventing water from leaking out.

GROUP SIZE : ANY

OUTDOOR

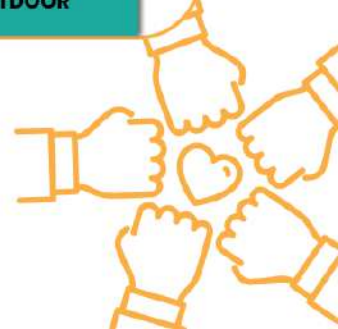
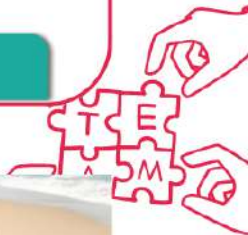


### RELAY

In this game, teams use small pipes to guide a marble/ball from start to finish, ensuring smooth handovers and synchronized movement without dropping it.

GROUP SIZE : ANY

OUTDOOR







## THE BIG PICTURE

This activity encourages collaboration and creativity as participants piece together individual contributions to form a cohesive, larger image, highlighting the importance of each member's role in achieving a unified vision.

GROUP SIZE : ANY

INDOOR/OUTDOOR



## TRAFFIC JAM

In this activity, two lines of participants face each other with an empty space in between. The goal? To swap places by following a set of movement rules without breaking the traffic flow.

GROUP SIZE : ANY

INDOOR/OUTDOOR



## OPERATION BOSS RESCUE

Escape the Boss is a thrilling team-building activity where participants must work together to complete various levels, ultimately freeing their boss from chains and locks.

GROUP SIZE : ANY

INDOOR/OUTDOOR



## FROSTBITE

The team leader has "frostbite" and can't use their hands, while the rest of the team is "snow-blind" and can't see! Together, they must build a shelter using limited resources. It's fun, fast-paced, and full of laughs and learning!

GROUP SIZE : ANY

INDOOR/OUTDOOR

